

FTA Monitor 700 CTN



Operator Panel Series for the Remote Control and Data Logging of PreVEx FTA Analyzers

FTA Monitor 700 CTN

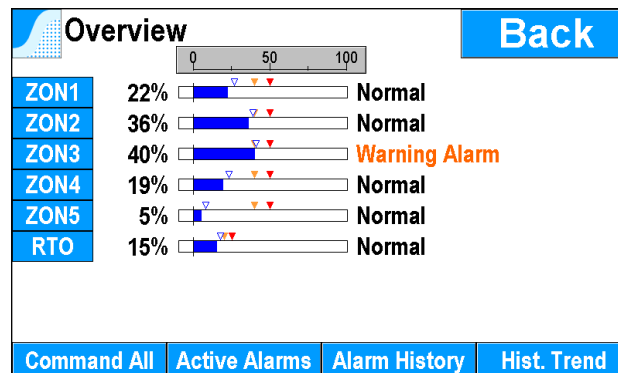
The FTA Monitor 700 CTN is a separate operator panel with touch screen for the PreVEx FTA analyzers of the 700 and 670 series. It allows the convenient remote operation of up to 16 analyzers from a distance and the logging of relevant analyzer data. The setup parameters, current status information and diagnostic information can be easily viewed and changed on the 7" color display. The operator can reset alarms and initiate calibrations via the panel. In addition, trend displays of analyzer readings and historic event lists can be inspected.

Multi-year archives of analyzer readings and alarm histories are stored on a USB stick.

The use of the FTA Monitor 700 CTN is very advantageous for a multitude of analyzers or when direct access to the analyzer(s) is not convenient or not possible, e.g. when the analyzers are installed in remote, inaccessible locations, outdoors or in a hazardous zone. In addition, a fault diagnosis can be much simplified by an inspection of the

event list (showing past fault messages, service needed requests, alarms, calibration, ...) which also contains important diagnostic parameters at the time of the event.

Each model is ready for the connection of a maximum number of analyzers. The number of actually connected analyzers can be less. The exact number of analyzers is configured at startup time, but can be adjusted at any later time.



Overview page with bar graphs in the model MON700-CTN-8

Easy Operation

Operating the FTA Monitor 700 CTN is very easy due to the self-explaining touch buttons, the text messages, the color coding of data and the fast access to frequently used information and functions.

Analyzers can be designated with names so that the sampling location for a particular analyzer connected to the FTA Monitor can be easily identified.

Various Models for different Numbers of Analyzers

The FTA Monitor 700 CTN is available in various models, each suitable for the connection of up to 1, 4, 8 or 16 analyzers. These analyzers can be any mixture of models of the 670 and 700 analyzer series: the different models will each be auto-detected by the FTA Monitor and treated accordingly.

LAN Interface

The LAN interface offers various services: A Modbus TCP server acts as a gateway and provides read access to the configuration and operating parameters of all connected analyzers. This can be used for data recording, visualization or analysis by higher-level systems. The Modbus TCP server can also be used to initiate commands on the analyzers so that alarms can be reset or calibrations can be initiated by a higher-level system.

An FTP server allows the download of archive files with readings and events lists

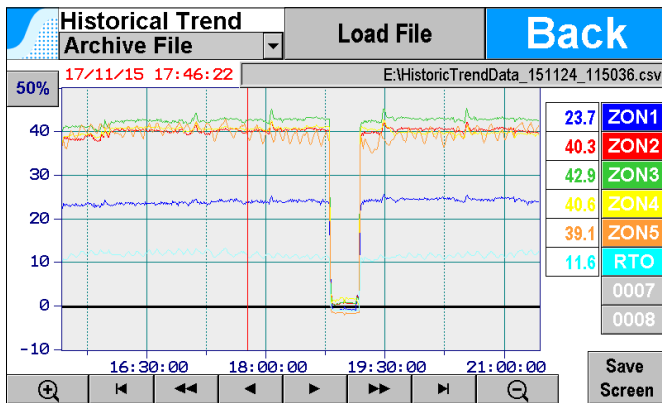
A VNC service allows the remote display or control of the FTA monitor from any PC, tablet or mobile phone, even via the Internet.

At a Glance

- Remote control and SCADA functionality for up to 16 PreVEx FTA analyzers of the 670 and 700 series with a single operator panel
- Easy access to the analyzer parameters and diagnostic information
- Password protection
- Convenient display of recent reading trends and event lists
- Storage of longterm archive files for readings and event lists on a USB stick
- Remote diagnostics
- LAN interface with Modbus TCP server providing analyzer parameters
- Display languages German and English
- Up to 1000 meters cable length to the analyzers



www.scima.com



Trend Displays

The FTA Monitor records the readings of the connected analyzer and can visualize the reading up the last 24 hours in a trend display.

Both the x-axis (time) and the y-axis (reading scale) can be adjusted to zoom into the relevant data.

Long-term archives of the analyzer readings are stored on a USB stick and can be used for further review on external computers.

Event Lists

Every relay action and fault, alarm or service message of the connected analyzer is recorded with a time stamp. In addition, specific diagnostic parameters are recorded with events and can be extremely useful for any trouble shooting. The messages can be viewed on screen and filtered according to user specified criteria.

Date	Time	No.	Grp.	ID	Clear	Message	
2015/11/24	12:07:47	1	5	ST04		Zero gas (FLOW:2.34)	▲
2015/11/24	12:07:47	1	5	RLY04		ZERO Relay	▲
2015/11/24	12:04:45	1	5	ST00	12:07:47	Normal	▲
2015/11/24	12:04:17	1	5	ST06	12:04:45	Purging (FLOW:2.34; PrevEx RAW ZERO:513.2)	▲
2015/11/24	12:04:17	1	5	RLY04	12:04:45	ZERO Relay	▲
2015/11/24	12:03:14	1	5	ST05	12:04:17	Span gas (FLOW:2.35; PrevEx RAW ZERO:513.2)	▼
2015/11/24	12:03:14	1	5	RLY05	12:04:17	SPAN Relay	▼
2015/11/24	12:02:11	1	5	ST04	12:03:14	Zero gas (FLOW:2.32) (FLOW:2.35)	▼
2015/11/24	12:02:11	1	5	RLY04	12:03:14	ZERO Relay	▼
2015/11/24	11:59:50	1	5	ST00	12:02:11	Normal	▼

Long-term archives of the event lists are stored as CSV files on a USB stick. These archive files can be analyzed on external computers.

Operating Principle

The FTA Monitor 700 CTN communicates with the analyzers via the RS-485 interface and continuously polls the setup and operating parameters of the connected analyzers.

The FTA Monitor itself does not store any analyzer parameters, you can continue to operate the analyzers directly at the analyzer panel.

The purpose of the FTA Monitor is to inform the operating personnel about the status of the analyzer(s) and for the remote setup and control of the analyzer(s).

Password Protection

Calibration of the analyzers and modifications of the configuration parameters of the connected analyzers are protected by passwords to prevent operation by unauthorized persons.

Installation

The FTA Monitor 700 CTN is installed in a cutout in a cabinet or panel. The FTA analyzers are connected via a common RS-485 bus cable (three-wire, twisted pair, shielded). The maximal cable length is 1000 Meters.

The FTA Monitor 700 CTN can easily be used to replace the previous models MON670-TOUCH, MON670-CT and MON670-CTN, it fits into the same cutout.

Specifications FTA Monitor 700 CTN				
Model designation	MON700 -CTN-1	MON700 -CTN-4	MON700 -CTN-8	MON700 -CTN-16
Maximum number of analyzers	1	4	8	16
Display	Touch-sensitive color screen with 7 inch (17,8 cm) diagonal, 800x480 pixels with LED lighting			
Power requirements	24 VDC ± 10%, 20 Watt			
Ambient temperature during operation	-10°C to 60°C			
Storage temperature	-20°C to +70°C			
Ingress protection	Front: IP 66			
Dimensions WxHxD	189,6 x 144,9 x 30 mm			
Cutout dimensions WxH	173,5 x 131,3 mm			
Weight	0,6 kg			
Interface to analyzers	Terminal block for serial RS-485 with Modbus RTU protocol, 19200 Baud Cable length up to 1000 Meters (cable not supplied)			
Additional interfaces	<ul style="list-style-type: none"> LAN 10/100 Mbit (DHCP, FTP, VNC, Modbus/TCP, ...) USB plug Type A for USB-Stick 2.0, FAT32, max. 32 GB 			
Display languages	German, English			

